

SHELL COVE THE WATERFRONT CENTRE

Landscape

We acknowledge First Nations peoples and their continuing connection to land, waters and culture, because we strongly believe in reconciliation and collaborative engagement for a better future.

We pay our respects to Elders past, present and emerging, whose knowledge, traditions and stories guide custodianship on what will always be their ancestral lands.

Issue	Title	Date	Prepared	Checked
1	Issued for Information	15/04/2023	FZ	SH
2	Issued for DA	25/05/2023	FZ	SH

CO N TEN TS

THE WATERFRONT CENTRE

LANDSCAPE SITE PLAN

4

LANDSCAPE WATERFRONT CENTRE

5

LANDSCAPE MATERIAL AND PLANTING PALETTE

6

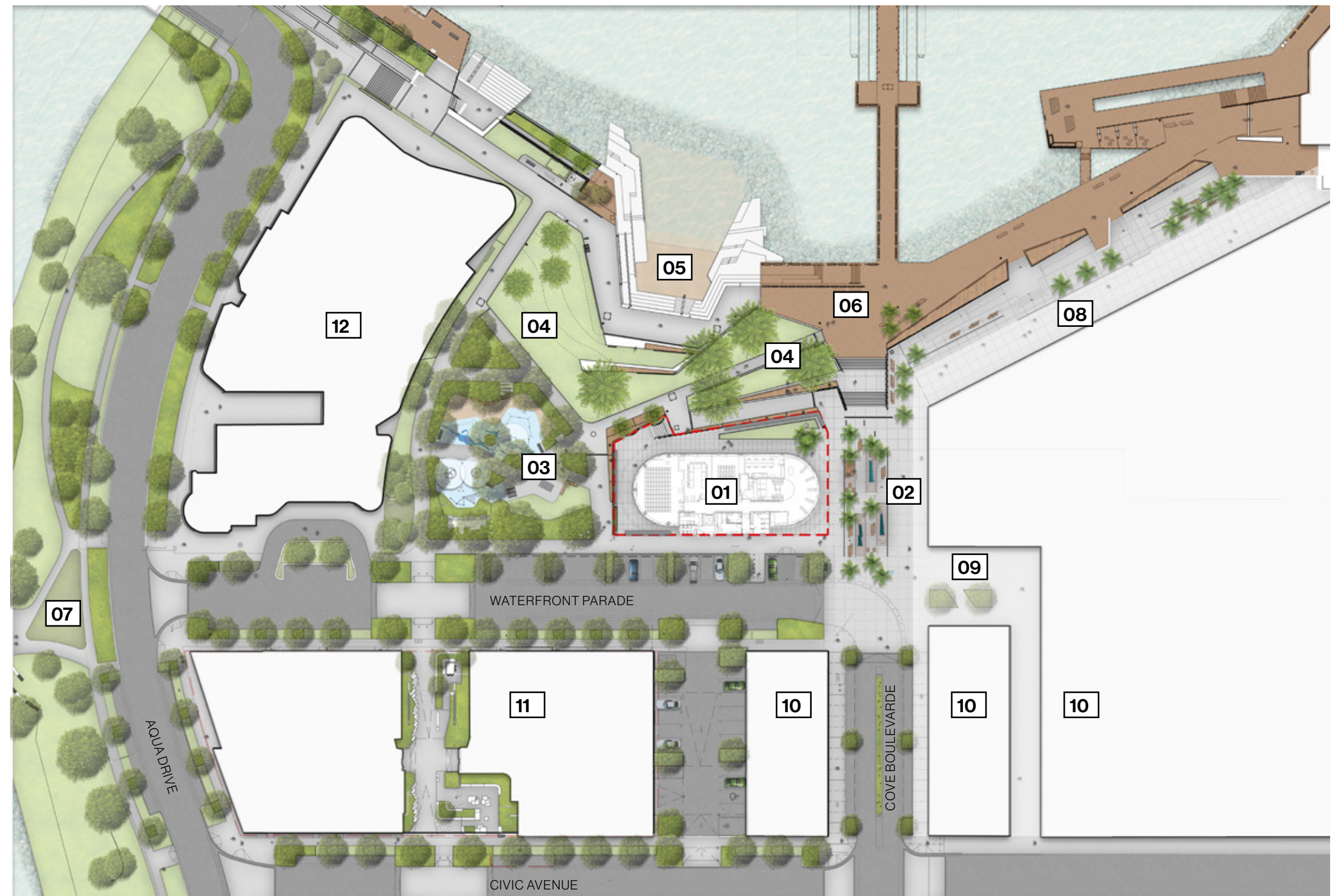
SITE PLAN

The Waterfront Centre sits in the heart of Shell Cove Precinct. The privileged location right on the Water side in the Town Centre it makes The Waterfront Centre a focal point for the current and future Community.

The site has a variety of offers, Plaza, waterplay, retails, the Kids beach, a turfed amphitheatre, timber boardwalk and a small playground just on the doorsteps of the building. Other green space are located in few minutes walk, foreshore promenade and the wetland parkland that provide different uses to the whole precinct.

Legend

- ■ Extent of DA
- 01 - The Waterfront Centre
- 02 - Existing public square with water play
- 03 - Future playground (not part of this approval)
- 04 - Existing public park turf area
- 05 - Existing Kids beach
- 06 - Existing timber boardwalk
- 07 - Existing wetland parkland
- 08 - Existing dining precinct
- 09 - Existing retail plaza
- 10 - Existing retail
- 11 - Future development (not part of this approval)
- 12 - Future Hotel (not part of this approval)



LANDSCAPE PLAN

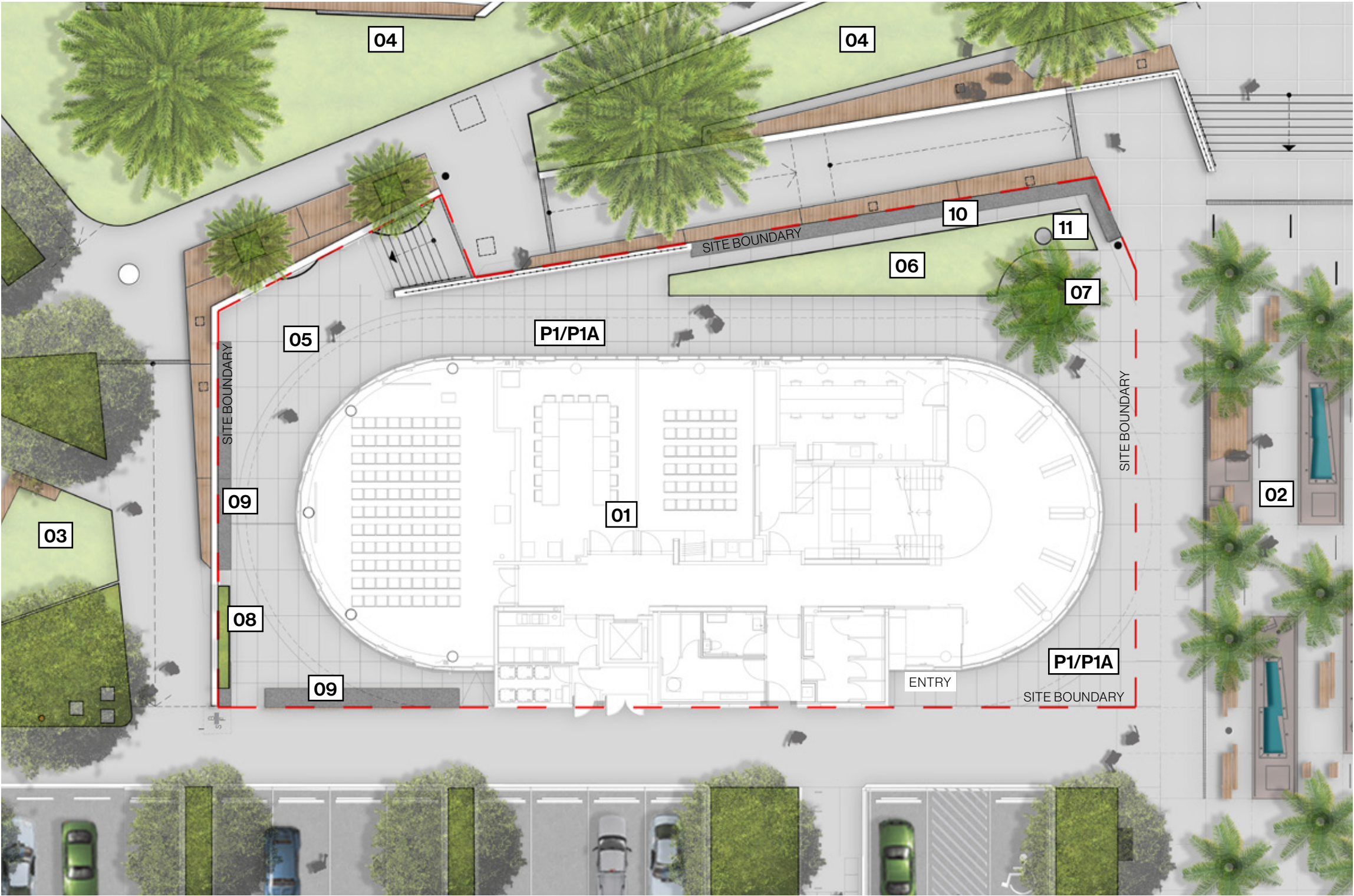
The Waterfront Centre is fully accessible from Waterfront Promenade and the nearby plaza.

The outdoor space is interconnected with the internal layout and aim for a flexible area where the internal function can spill out into the outdoor terrace.

A small patch of turf and a circular seat with planting and palms tree are located in between the Centre and the water to provide a zone of green for the users.

Legend

- - Extent of DA
- 01 - The Waterfront Centre
- 02 - Existing Public Square with Water Play
- 03- Future playground (not part of this approval)
- 04 - Existing Public Park turf area
- 05 - Community Centre Outdoor Terrace
- 06 - Community Centre Turf area
- 07 - New Public Seating around three new Cabbage Palm trees (Livistona australis) and low level drought tolerant planting
- 08 - New public seating with integrated planter
- 09 - New public seating
- 10 - New public seating and balustrade
- 11 - Existing sewer pit
- P1/P1A - Insitu concrete pavement



THE WATERFRONT CENTRE

MATERIAL SCHEDULE

Insitu Concrete type P1



Insitu concrete type P1:
Oxide: Obsidian 8%
Aggregates: 10mm Nepean River Gravel + 10mm Blue
Metal Rate: 1:1
Finish: Heavy Honed - Natural Sealant

Insitu Concrete type P1A



Insitu concrete type P1A:
Oxide: Obsidian 8%
Aggregates: 10mm Nepean River Gravel + 10mm Blue
Metal Rate: 1:1
Finish: Heavy Sandblast - Natural Sealant

Bluestone



Stone Perimetral bench, Circular bench and Balustrade
(Refer Architect plans)
Type: Bluestone
Finish: Honed

Circular bench



Livistonia australis



Cabbage Palm tree different size.
1x 6m
1x 4m
1x 2m
All dimension refer to trunk size.

Planting



The plant mix of native drought tolerant species will provide a tough selection for the coastal environment

Turf



Turf: Kikuyu

external landscape elements

*refer to DA report materials samples and landscape report for more details of materials

- 1 concrete insitu to match existing public domain
- 2 bluestone paver - public domain benches + wall cladding
- 3 integrated landscaped planter - native drought tolerant
- 4 steel sections clad in the blue stone emphasising a monolithic expression (with the appearance of no joints)
- 5 3D illustration of balustrade
- 6 3D illustration of bench



1



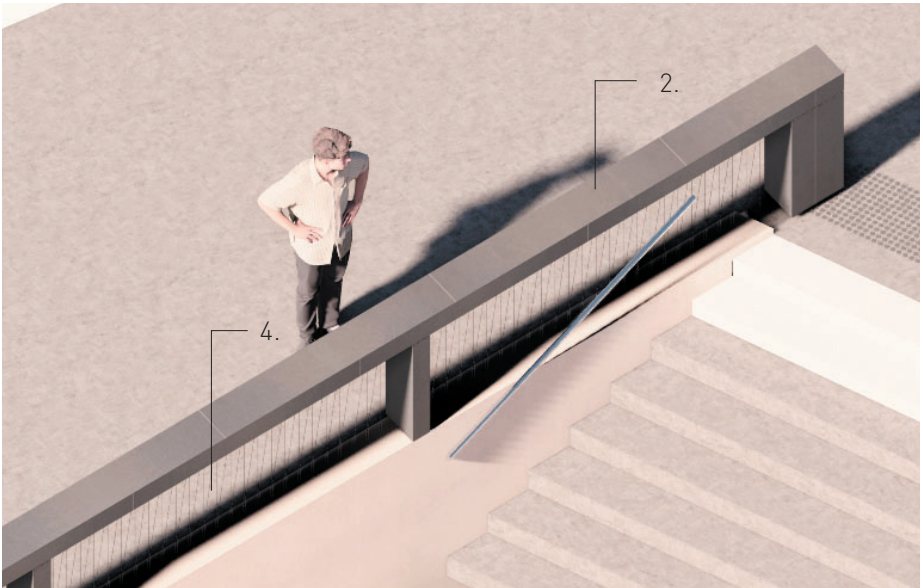
2



3



4



5



6

SYDNEY

Level 7, 80 William Street
East Sydney NSW 2011
Australia

MELBOURNE

Level 4, 152 Elizabeth Street (by appointment only)
Melbourne VIC 3000
Australia

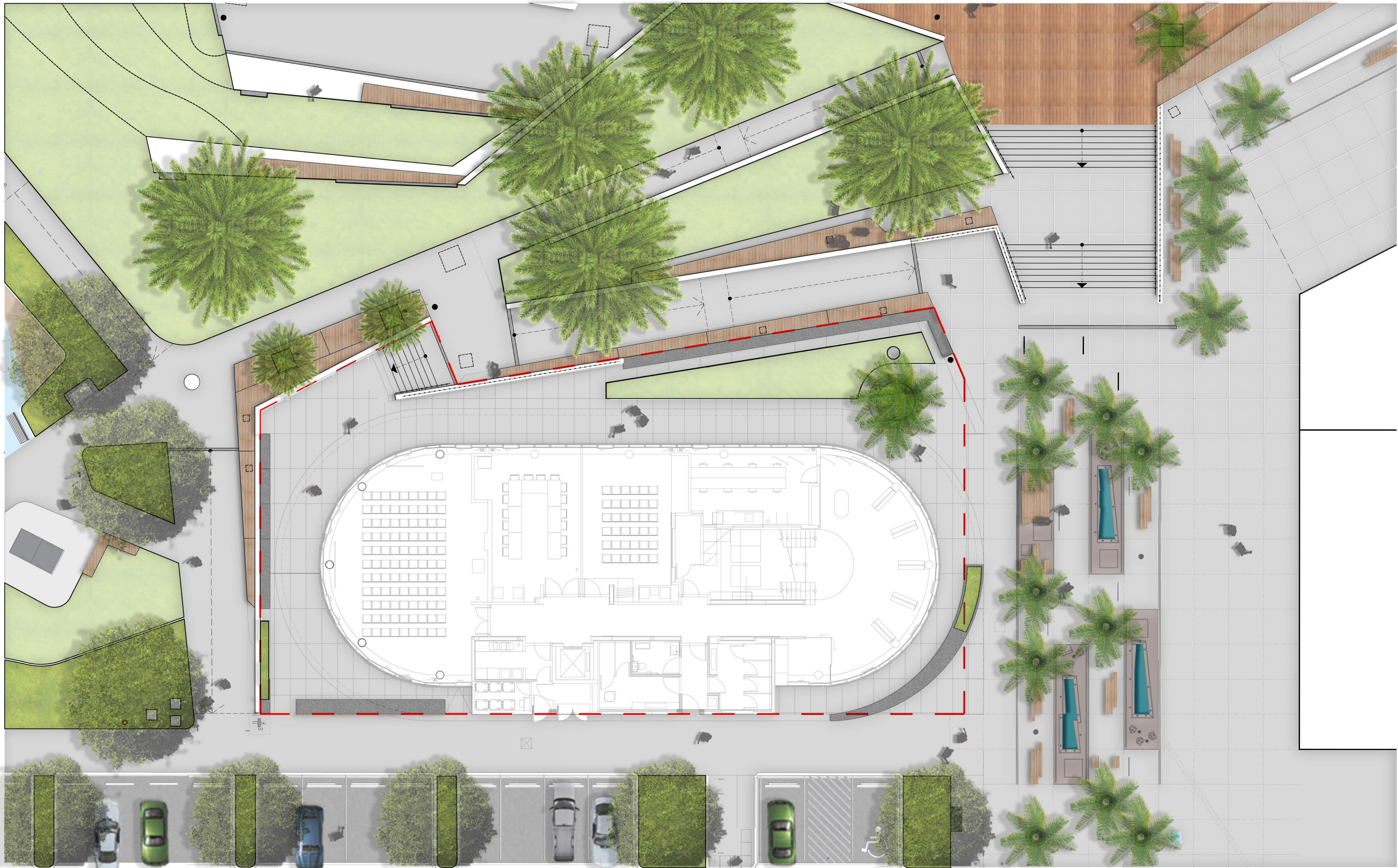
BRISBANE

Level 14, 100 Edward Street
Brisbane QLD 4000
Australia

HO CHI MINH CITY

19th Floor – Havana Tower, 132 Ham Nghi,
Ben Thanh Ward, District 1, Ho Chi Minh City
Vietnam

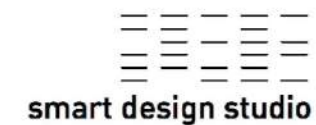




Amendments	Description	Date
1	ISSUE FOR COORDINATION	18/04/2023
2	ISSUED FOR DA	25/05/2023
3	REVISED DA	19/09/2023

Client
FRASERS PROPERTY
Level 3, Bulling C, 1 Homebush Bay Drive,
Rhodes, NSW 2138.
T: +612 9767 2000

Consultant
SMART DESIGN STUDIO
14 Strokes Ave, Alexandria, NSW 2015.
T: +6128324333



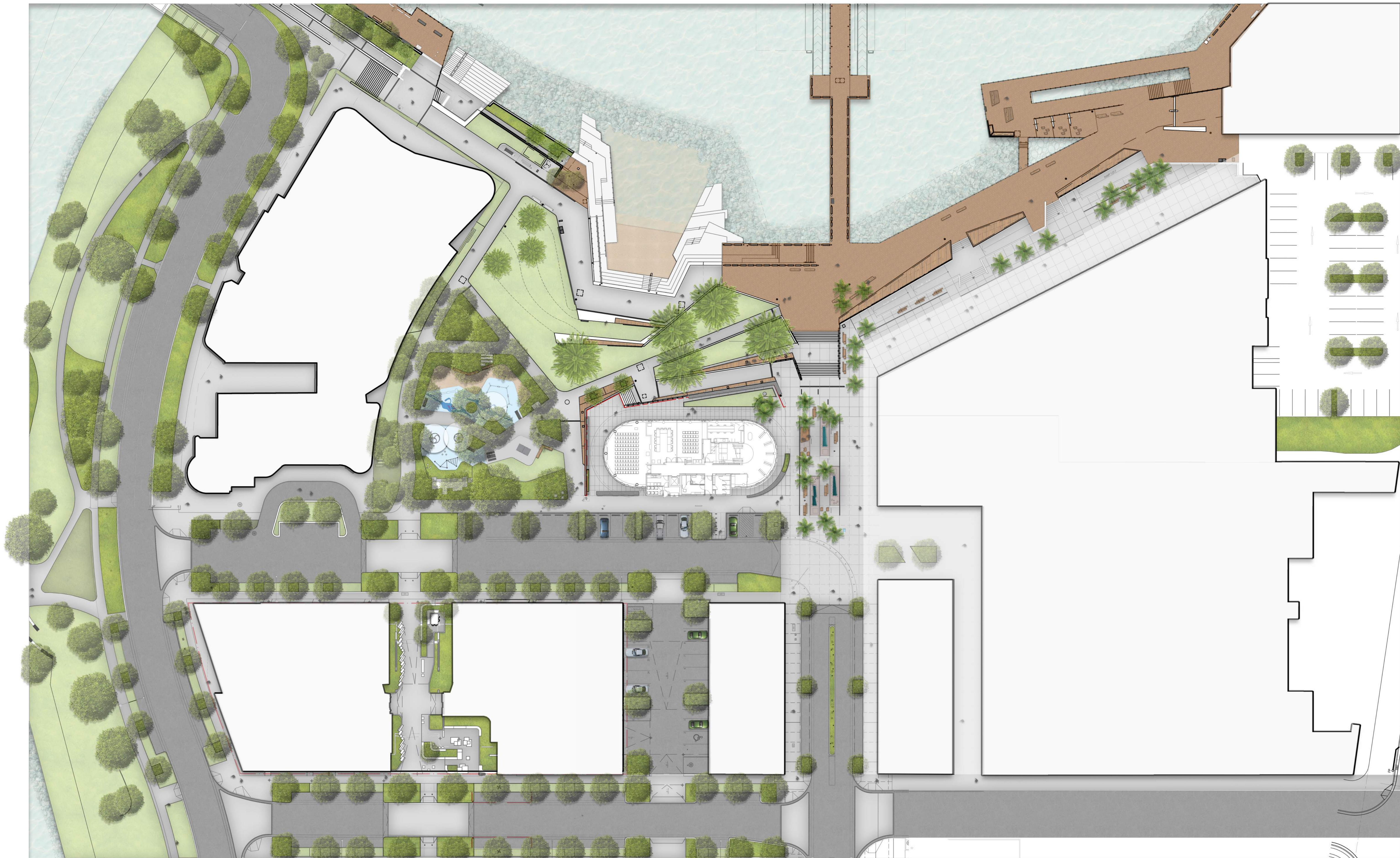
GROUP GSA
Group GSA Pty Ltd ABN 76 002 113 779
Level 7, 80 William St East Sydney NSW
Australia 2011 www.groupgsa.com
T +612 9361 4144 F +612 9332 3458
architecture interior design urban design landscape
nom architect Lisa-Maree Carrigan NSW 7568

Project Title
Shellcove
Drawing Title
WATERFRONT CENTRE

Drawing Created (date)	13/10/21
Drawing Created (by)	NN
Verified	NN
Approved	FZ
Scale	@A1 1:100

Project No.	Drawing No.	Issue
13294 -	L-2001	3

This drawing is the copyright of Group GSA Pty Ltd and may not be altered, reproduced or transmitted in any form or by any means in part or in whole without the written permission of Group GSA Pty Ltd.
All levels and dimensions are to be checked and verified on site prior to the commencement of any work, making of shop drawings or fabrication of components. Do not scale drawings. Use figured Dimensions.



Amendments

	Description	Date
1	ISSUED FOR COORDINATION	13/02/2023
2	ISSUED FOR DA	25/05/2023
3	REVISED DA	19/09/2023

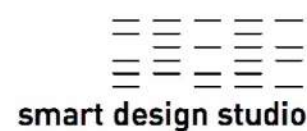
Client

FRASERS PROPERTY
Level 3, Building C, 1 Homebush Bay Drive,
Rhodes, NSW 2138.
T: +612 9767 2000



Consultant

SMART DESIGN STUDIO
14 Strokes Ave, Alexandria, NSW 2015.
T: +6128324333



Architect

GROUP GSA
Group GSA Pty Ltd ABN 76 002 113 779
Level 7, 80 William St East Sydney NSW
Australia 2011 www.groupgsa.com
T +612 9361 4144 F +612 9332 3458
architecture interior design urban design landscape
nom architect Lisa-Maree Carrigan NSW 7568



Project Title

Shellcove

Drawing Title

WATERFRONT CENTRE
SITE PLAN

Drawing Created (date)	13/10/21
Drawing Created (by)	NN
Verified	NN
Approved	FZ
Scale	1:350 @A1



Project No.	Drawing No.	Issue
13294 -	L-2002	3

This drawing is the copyright of Group GSA Pty Ltd and may not be altered, reproduced or transmitted in any form or by any means in part or in whole without the written permission of Group GSA Pty Ltd. All levels and dimensions are to be checked and verified on site prior to the commencement of any work, making of shop drawings or fabrication of components. Do not scale drawings. Use Figured Dimensions.